



## Eastern NC Nursery News

July 2017

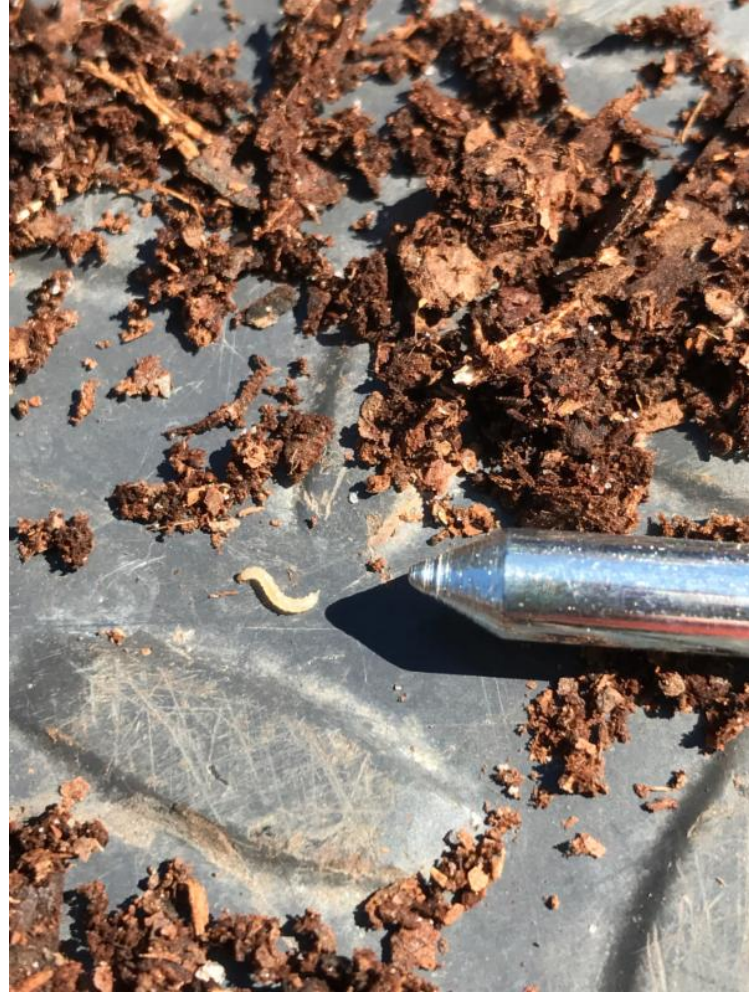
Find the latest information about nursery production in Eastern NC below!

[Visit Danny's Website](#)

### Second Generation Red Headed Flea Beetle Larvae Found

Second generation larvae were found in central eastern NC on June 26 at 2241 GDD. If you have or do notice a lull in feeding activity of adults then first generation egg laying has happened and larvae hatch is next. Second generation adults are probably already out in southeastern NC and will be out soon in central eastern NC. It takes 3-5 weeks from first larvae

emergence to first adult emergence. I expect 2nd generation adults to be emerged widespread during the first two weeks of July. I am continuing research trials on larval control options and will provide an update of that research during winter meetings in preparation for the 2018 growing season. I have also done some introductory monitoring of movement of adults from outside the nursery and have not seen much. I hope to start trials in 2018 on granular incorporated products for larval control. Let me know if you are interested in cooperating with any type of red headed flea beetle research and demonstration projects (cell number and email address at bottom of this newsletter).



*Systema frontalis* 2nd generation larvae found at 2241 GDD.

## Eastern NC Certified Plant Professional Training Course to begin September 7th!

If you have key employees who need or want training related to plant identification, plant care, and nursery production practices then you may be interested in sending them to this series of training classes taught together as one course. The focus is plant identification including learning more about plant biology, anatomy, physiology, and plant naming. Other topics taught to prepare applicants for the exam are plant selection, soils, proper planting/potting, design, lawns, plant nutrient management, integrated pest management, pesticide safety, pruning,



Prepare for the October 26 CPP Exam in Wilson, NC by taking this course that meets one day a week for 7 weeks. This course will help you pass the written and plant identification tests to become a NC Certified Plant Professional if you do your part to prepare and study the material taught. Space is limited so register soon, deadline for registration is August 18.

marketing, and management. If have questions give me a call or email.  
[Click here for more information and printable registration form!](#)

## Eastern NC Field Nursery Growers to Visit Western NC Growers for Information Exchange



If you're interested in a trip to Western NC to share and learn more about field production practices, give me a call or email (number and address at bottom) or Danny VanDevender at 919-344-4541 or [danny@jerichofarms.com](mailto:danny@jerichofarms.com). More details will follow related to transportation, meals, and lodging as plans come together. We are coordinating the trip with Amanda Taylor, my counterpart in the Western part of the state, along with Chad and Jeff Gragg. The trip is planned to depart the morning of Wednesday, August 16 and return the afternoon of Friday, August 18. This will be a great opportunity to laugh, learn, and fellowship. I'm looking forward to it.

The Eastern Region Nursery and Greenhouse Program at NC Cooperative Extension is your source for research-based production information for greenhouse and nursery crops in Eastern North Carolina.

Danny Lauderdale | Area Specialized Agent | 252-714-0274 | [danny\\_lauderdale@ncsu.edu](mailto:danny_lauderdale@ncsu.edu) | <https://wilson.ces.ncsu.edu/profile/danny-lauderdale/>

STAY CONNECTED:

