



Eastern NC Nursery News

April 2017

Find the latest information about nursery production in Eastern NC below!

Visit Danny's Website

Red-Headed Flea Beetle Larvae Scouting and Observation Update

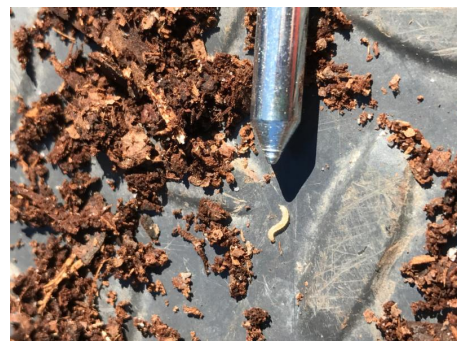
I have continued to scout at nurseries for RHFB larvae. Larvae were found in New Hanover County on March 1, Pitt County on March 17, Sampson County and Johnston County on March 21, and Cumberland County on March 29. Make sure to irrigate prior to scouting. There is a lot of variability in emergence time and GDD from nursery to nursery so keep scouting when in GDD window. My first lab observation of 4 different rates of incorporated granular bifenthrin for larval control produced no control at any rate. Check out these links in blue to review RHFB resources including [Biology and Management article](#) from NCLNA Nursery and Landscape Notes and [Larval Scouting Video](#).



Larvae are in containers throughout southeastern NC right now and will be found in northeastern NC soon.

Growing Degree Days for Red-Headed Flea Beetle Larvae

Monitoring growing degree days is important when scouting for RHFB larvae. If you had damaged plants that are still on the nursery from last year scout those plants for larvae. I will be putting in a lab trail later today to look at some rescue drench options for larval control. Here is where we are at on GDD based on 50 degrees Fahrenheit for some locations throughout



eastern NC (use Zip code, 50 degrees F, and Current year at Syngenta tool below to get yours):

- Fayetteville 549 (I believe high by 60 GDD)
- Wilmington 518
- Goldsboro 452
- Greenville 381
- Raleigh 389
- Rocky Mount-Wilson 329

Scout for larvae by pulling plants from containers and looking on outside of root ball. Refer to video link in above article.

- Smithfield 346
- Elizabeth City 298
- Roanoke Rapids 262

[Quick GDD Tool from Syngenta](#)

Potato Leaf Hopper

We are getting close to time for arrival of potato leaf hoppers which cause hopper burn on maples that may look like a foliar burn or anthracnose. This damage is preventable by either making systemic drench insecticide applications before insect arrival that will give control for 2 years or by making several contact insecticide applications during the growing season. See more in the maple chapter in the IPM Tree book at: [Maple Chapter](#)



Potato leaf hopper nymph and adult.

Greenhouse and Covered House Weed Control Webinar

Dr. Joe Neal will be presenting a webinar with Ball Horticulture on April 25 at 1 pm on weed control in covered houses. Click the link below for link to register for the webinar.



[Controlling weeds in greenhouses and other covered structures](#)

Crapemyrtle Bark Scale Management Update

Erfan Vafaie, a Texas A&M Extension entomologist and integrated pest management program specialist has been studying crawler activity of this insect for the past two years. The data collected has helped researchers develop strategies against them. Find more at the link below.



[Crapemyrtle Bark Scale Study](#)

The Eastern Region Nursery and Greenhouse Program at NC Cooperative Extension is your source for research-based production information for greenhouse and nursery crops in Eastern North Carolina.

Danny Lauderdale | Area Specialized Agent | 252-714-0274 | danny_lauderdale@ncsu.edu | <https://wilson.ces.ncsu.edu/profile/danny-lauderdale/>

